

ALL-WORLD HOCKEY SUMMER CAMPS

2022



The All-World Hockey Institute was founded twenty-eight years ago on our philosophy of grassroots development, and that philosophy still holds true today. Our programs emphasize skill development, proper technique, game knowledge and sportsmanship. This approach allows players the opportunity to reach their highest potential. Our camps feature challenging programs with professional instruction available for all levels of players from novice to AAA, we have a camp for you! I am proud to say that the All-World Hockey Institute has set the standard in Southern California for the education and development of the complete hockey player.

We are very fortunate to welcome back for his twenty-sixth year as Camp Director, Rick Hutchinson and his staff to the All-World Hockey Institute. Rick is dedicated to making this an incredible learning experience for the students.

We look forward to another summer of exciting hockey instruction, games, and most of all fun.



A stylized, handwritten signature in black ink that reads "Art Trottier". The signature is fluid and cursive, with the first letters of the first and last names being capitalized and prominent.

Art Trottier,
Vice President, The Rinks



PROGRAM INCLUDES

- **PROFESSIONAL INSTRUCTION**
- **CAMP T-SHIRT & JERSEY (*LIMITED TO ONE EACH PER SUMMER.*)**
- **DAY CAMP HOURS:**
(*SEE INDIVIDUAL CAMPS FOR SPECIFIC TIMES*)
- **LUNCH SPECIALS AVAILABLE**
(*CHECK RINK LOCATIONS FOR DETAILS*)

WHY ALL WORLD HOCKEY?

UNPARALLELED COACHING STAFF:

Professional coaches selected for their ability to communicate and teach the game of hockey to all levels and abilities. Rick takes great pride in his outstanding staff of professional instructors and junior instructors.

LOW STUDENT TO INSTRUCTOR RATIO:

The All-World Hockey Institute prides itself on its high level of intensity and discipline. The camps are designed for the serious student of hockey and personal one on one training and evaluation. The summer program ratio for on ice training will not exceed 5 to 1. We find this maximizes our staff and allows students immediate feedback on skills and abilities.

INNOVATIVE DRILLS AND EUROPEAN CIRCUIT TRAINING:

Players need a challenge in order to improve their skills. Director Rick Hutchinson employs recent & unique methods of training, power skating techniques available. Players will not be bored, standing in line doing the same old drills, rather training in a high tempo, circuit style, that keeps them moving at all times.

LIMITED CLASS SIZE:

Based on Age and Ability. Based on player profiles, All-World Hockey Institute will separate players according to ability allowing players to work with their peer group only. Class sizes are limited to ensure quality training and appropriate student to instructor.



Launched in February 2009, THE RINKS Development Program now consists of eight local skating facilities operated by the Anaheim Ducks: six ice rinks (THE RINKS – Anaheim ICE, THE RINKS – Lakewood ICE, THE RINKS – Poway ICE, THE RINKS – Westminster ICE, and THE RINKS – Yorba Linda ICE, and Great Park Ice & Fivepoint Arena), as well as two inline facilities (THE RINKS – Irvine, and THE RINKS – Corona Inline).

For information on THE RINKS program, visit [**www.TheRinks.com**](http://www.TheRinks.com)



GREAT PARK ICE

The Irvine Ice Foundation (IIF) opened the doors to Great Park Ice in March 2019. The 280,000 square foot multi-functional facility features four ice sheets (3 NHL size and 1 Olympic size) including the Five Point Arena, an arena with the capability of hosting 2,500 spectators for events. For more information on Great Park Ice programs, visit [**www.GreatParkIce.com**](http://www.GreatParkIce.com).



2022 CAMP DIRECTOR **RICK HUTCHINSON**



Camp Director Rick Hutchinson, a twenty-eight year veteran of the All-World Hockey Institute, brings both experience and leadership to these camps. His dedication to hockey development over the past thirty years, along with his innovative approach to teaching, has made him one of the best in the business.

“The All World Institute’s continued success is founded on our philosophy of grassroots skill development. Our programs emphasize skill development, proper techniques, game knowledge, and sportsmanship. This approach allows players the opportunity to reach their highest potential. Hockey not only builds confidence and self-esteem but also prepares you for everyday challenges in life. Teamwork, sportsmanship and respect are some of the core values to build upon when preparing an athlete.”

2021 SUMMER CAMPS

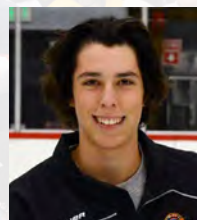
ALL-WORLD HOCKEY COACHING STAFF



Vince Valles-
Coach Vince excels as a skills coach and is regarded as one of the best coaches in the Southland. In addition, he understands how to get the most out of his players at every camp.



Jon Mainberger-
Coach Jon has an exceptional skill set for on ice demonstration and brings great energy to the All-World Hockey Institute Camps daily.



Carlos Rich- Coach Carlos is well known for his ability to unlock the full potential in all of his players with his outstanding patience and communication skills.



Brett Kurtz-
Coach Kurtzy, is known for his energetic personality & love for the game. After serving as assistant captain for the Wisconsin Badgers, he's spent over 20 years coaching & developing players of all levels on & off the ice.



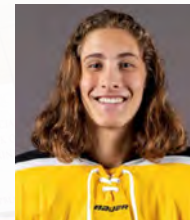
Dean Wilson-
Coach Dean is a professional instructor and has been coaching for the past 20 plus years including Mites up to College. His experience and high understanding of the game has made him a well known figure in the hockey community.



Chase Reddin-
Coach Chase is one of the best skills coaches in SoCal. Specializing in stick-handling and skating, Coach Chase gets the most of each and everyone of his players so they can see their full potential.

2021 SUMMER CAMPS

ALL-WORLD HOCKEY COACHING STAFF



Nico Santoro- Coach Nico brings a youthful energy that matches the players he coaches. A current LBSU hockey player, Nico, knows what it takes to get your child to learn the most in a timely fashion.



Kyle Gonzalez- Coach "Gonzo" is a current pro player who brings his experience and passion for the game to the All World Hockey Institute Camps every day.



Celeste Loyatho- Coach Celeste is a World Champion with the Team USA Women's Roller Hockey Team and a big part of our Lady Ducks program. Her passion for the game is seen with how she teaches her students.



Nick Ganga- Coach Nick brings a distinguished level of coaching to the All-World Hockey Institute Camps. His knowledge and passion for the game is shown by how well he works with his students.



Alex Altman- Coach Alex is a current college player whose love for the sport shows in the way he coaches. His passion for the game, developed by participating in All World Hockey Camps translates well to his students with the patience needed for younger players to learn.



GIRLS PLAYER DEVELOPMENT

Designed for forwards and defensemen, this camp will make you an offensive threat as well as a competent defender in your zone. Learn from professional instructors, current and former, National, Division I players and Elite coaches. Unique features: Secrets of puck control, advanced deking techniques, read and react in the scoring zone, advanced power skating and balancing techniques. Learn to use your body to protect the puck in daily battle drills and inter-squad scrimmages.

- Camp Fee: \$315
- Time: 7:30am-12:00pm
- Participants must be 5-14 years old
- Basic skating skills required

DATE

• Anaheim ICE, June 27-29

GIRLS/WOMEN HIGH PERFORMANCE ELITE TRAINING

Designed for forwards and defensemen, this camp will make you an offensive threat as well as a competent defender in your zone. Learn from professional instructors, current and former, National, Division I players and Elite coaches. Unique features: Secrets of puck control, advanced deking techniques, read and react in the scoring zone, advanced power skating and balancing techniques. Learn to use your body to protect the puck in daily battle drills and inter-squad scrimmages.

- Camp Fee: \$315
- Time: 7:30am-12:00pm
- AGES 10-18 AA, AAA LEVEL PLAYERS ONLY

DATE

• Anaheim ICE, June 27-29

COACHING STAFF

• Kathy McGarrigle



Coach Kathy was recently announced as the 2020 recipient of the Joe Burke award, by the American Hockey Coaches Association for her work and dedication to Girls/Women's hockey. Founder, Program Director, and Head Coach of the Anaheim Lady Ducks since 1999, Coach Kathy, has overseen the growth of more than 125 Lady Ducks players transition into the NCAA.

• Vicky Wang



Coach Vicky, a former member of the Chinese National Hockey team, was a major contributor to China's 4th place finish at the 1998 Winter Olympics. After retiring from the national team she moved permanently to California where she has been working with The Rinks for nearly 20 years. With a gift for coaching, Coach Vicky knows how to raise the bar higher for her players, creating an environment where players can connect the dots and learn to push themselves



POWER SKATING, PASSING SKILLS & MINI GAMES

(5-14 years old, basic skating skills required - participants divided by age and skill level)

LEARN THE IMPORTANCE OF THE PERFECT STRIDE USING INNOVATIVE TECHNIQUES TO MAXIMIZE YOUR POWER AND SPEED. SPEND AN INTENSE THREE DAYS MASTERING YOUR STRIDE, BUILDING BETTER BALANCE, AND IMPROVING YOUR CORE COORDINATION. FINISH EACH DAY WITH AN INTER-SQUAD SCRIMMAGE. WORK HARD, PLAY HARD!

- Camp Fee: \$315
- Time: 7:30am-12:00pm (Poway ICE 8:00am-12:30pm)
- Participants must be 5-14 years old
- Basic skating skills required

DATES

- Poway ICE, June 20-22
- Yorba Linda ICE, June 27-29
- Lakewood ICE, July 18-20



EUROPEAN PUCK HANDLING, DECEPTIVE SKATING & DEKING CAMP

ONE OF OUR MOST CHALLENGING CAMPS - GREAT FOR ALL PLAYERS!

LEARN THE SECRETS OF EUROPEAN EDGES, FLOWING PUCK CONTROL AND DECEPTIVE SKATING. ONE ON ONE DEKES AND DECEPTION WILL MAKE YOU AN OFFENSIVE THREAT EVERY TIME YOU TOUCH THE PUCK. THIS CAMP CHALLENGES EVEN THE BEST DANGLERS. LEARN THOSE DECEPTIVE MOVES THAT THE PROS USE. A VERY DEMANDING CAMP THAT KEEPS THE PUCK ON YOUR STILL ALL DAY!

- Camp Fee: \$315
- Time: 7:30am-12:00pm
- Basic Skating and Stickhandling Skills Required

DATES

- Great Park Ice, July 5-7
- Poway ICE, July 18-20
- Anaheim ICE, July 25-27

SNIPER SHOOTING, SCORING & GOALIE CAMP

ALL AGES & SKILL LEVELS WELCOME

CAN YOU PICK THOSE CORNERS? CAN YOU MOVE THE GOALTENDER? PLAYERS NEED TO MASTER THE PROPER TECHNIQUES OF SHOOTING SKILLS BEFORE BECOMING A GREAT GOAL SCORER. THIS PROGRAM FOCUSES ON CORRECT, PROVEN SHOOTING TECHNIQUES AND TACTICS OF BECOMING A SNIPER! WHETHER YOU ARE A FORWARD OR A DEFENSEMAN, THIS PROGRAM WILL TEACH YOU THE SECRETS OF BECOMING A GREAT SHOOTER AND GOAL SCORING THREAT! GOALIE'S WELCOME. (GOALIE INSTRUCTION AVAILABLE WITH PAID REGISTRATION)

- Camp Fee: \$315
- Time: 7:30am-12:00pm (Poway ICE 8:00am-12:30pm)
- All ages and skill levels welcome

- Anaheim ICE, July 5-7
- Great Park Ice, July 25-27
- Poway ICE, August 8-10



Goalies welcome. (Goalie instruction available with paid registration)



BODY CHECKING & BATTLE CAMP

SQUIRT OR HIGHER - DIRECTOR'S APPROVAL REQUIRED

THIS CAMP IS GREAT FOR YOUNGER PLAYERS LEARNING TO USE THEIR BODIES IN BATTLE SITUATIONS. USING PROVEN NORTH AMERICAN AND OFF-ICE EUROPEAN TEACHING TECHNIQUES, PLAYERS LEARN TRUE AND SAFE METHODS TO GIVE AND RECEIVE ALL STYLES OF BODY CHECKS. LEARN WHEN AND HOW TO USE BODY CONTACT TO DOMINATE YOUR GAME IN A SAFE, CONTROLLED LEARNING ENVIRONMENT. READ AND CREATE OPPORTUNITIES USING YOUR BODY, CORNER DOMINANCE, GAP-CONTROL, AND ANGLE OPPONENTS OFF THE PUCK. A WORLD-CLASS CLINIC DESIGNED TO CHANGE YOUR GAME WHILE BUILDING SELF-CONFIDENCE. END EACH DAY WITH INTER-SQUAD GAMES. SAFETY DOESN'T TAKE A HOLIDAY! - ALL PLAYERS MUST WEAR ALL PROTECTIVE GEAR INCLUDING A MOUTH GUARD.

- Camp Fee: \$315
- Time: 7:30a-12:00p

- Great Park Ice, August 8-10

DOMINANT DEFENSEMAN 2.0

DESIGNED FOR FORWARDS AND DEFENSEMEN, THIS IS A DEMANDING CHALLENGE FOR THOSE PLAYERS WHO NEED TO WORK ON THE DEFENSIVE POSTURE. AN EMPHASIS ON DEFENSIVE POWER SKATING WILL IMPROVE YOUR BACKWARD TECHNIQUE, COORDINATION, AND SKATING TRANSITIONS. READING AND CREATING PLAYS BOTH OFFENSIVELY AND DEFENSIVELY, GAME RELATED PASSING, GAP CONTROL, ESCAPES, STICK CHECKING TECHNIQUES AND SHOOTING TO CREATE SCORING OPPORTUNITIES. THE MOST POPULAR OF THE ALL-WORLD CAMPS! SQUIRTS THROUGH MIDGETS WILL LEARN THE SECRETS OF THE DEFENSEMEN FROM PROFESSIONALS AND BECOME A DOMINANT DEFENSEMAN WHENEVER YOUR TEAM DOESN'T HAVE THE PUCK. ALL PLAYERS MUST HAVE AT LEAST AN INTERMEDIATE SKATING LEVEL TO ATTEND THIS CAMP.

• Camp Fee: \$420

• Time: 7:30am-12:00pm, Poway ICE 8:00am-12:30pm

• Ages 10-17, Intermediate Skating Skills & League Play Experience Required

DATES

• Poway ICE, June 27-29

• Great Park Ice, July 11-14

• Anaheim ICE, August 1-4



PUCK HANDLING, DEKES & SHOOTING CAMP

BASIC SKATING & STICKHANDLING SKILLS REQUIRED

A combination of a couple of our most challenging camps - great for ALL players!

Learn the secrets of puck control and dekes, dangles and shooting to score. One on one dekes and deception will make you an offensive threat every time you touch the puck. This camp challenges even the best dangles. Learn those deceptive moves that the pros use. A very fun and demanding camp that keeps the puck on your stick all day!

• Camp Fee: \$315

• Time: 7:30am-12:00pm

DATE

• Lakewood ICE June 27-29

• Yorba Linda ICE July 18-20



ANAHEIM DUCKS YOUTH CAMP

Great for players in Little Ducks & Hockey Initiation!

Spend an unforgettable 4 days with professional coaches, learning all aspects of the game of ice hockey at either The Great Park Arena or The Rinks -Anaheim ICE (the official practice facilities of the Anaheim Ducks). Both on and off the ice, our staff will develop your youth hockey player using comprehensive instruction in a controlled and friendly environment, making learning fun. Each day will consist of on and off ice drills, scrimmages, fun and games. At Great Park Arena, you never know who could drop by to say hello!

- Camp Fee: \$420 (GPI, AI)
- Time: 7:30am-12:00pm
- Participants must be 5-12 years old
- Basic skating skills required

DATES

- Great Park ICE, June 27-30
- Great Park ICE, August 1-4
- Anaheim ICE, August 8-12



INLINE HOCKEY CAMPS

The Irvine Inline Summer Camp Series is a great way for youth hockey players to work on their skills and hockey knowledge in a fun, positive environment. Our 3 day summer camps here at Irvine Inline are coached by an experienced group of staff that enjoy the game of hockey. Each day of the camp includes a dryland warmup, on rink instruction with our coaching staff, a hockey trivia game, and a snack break to refuel. All skill levels are welcome and encouraged. We hope to see you on the rink with us soon!

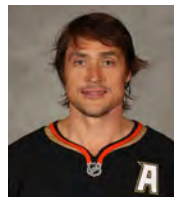
- Camp Fee: \$160 INCLUDING SNACKS & A DRINKS
- Time: 9:00am-1:00pm

DATE

- Inline Skills Camp 1, April 4-6
- Inline Skills Camp 2, June 6-8
- Inline Skills Camp 3, June 27-29
- Inline Skills Camp 4, August 1-3

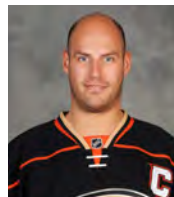


ENDORSEMENTS



TEEMU SELANNE (NHL HALL OF FAME)

“I have played 20 years in the NHL and witnessed many coaches and their approach to instruction. Rick’s ability to teach, coach, and demonstrate proper techniques is outstanding.”



RYAN GETZLAF (NHL ANAHEIM DUCKS CAPTAIN)

“Since I was a rookie I’ve witnessed Hutch develop young player after player. His ability to build confidence and creativity in young players is few and far between. I support Hutch’s training methods and his commitment to youth hockey development in southern California”



2021 CAMP TESTIMONIALS

Travis loves All World Hockey Camps. He always learns new skills and makes new hockey friends there. I love that we don’t have to stress, and they get a good lunch purchase option too. The coaches are always fun, knowledgeable, and very entertaining but also work hard to help the kids learn a lot at the same time. **-Alison B.**

My son Nikolas attended several camps last year. It was his first year in a league. We were so impressed in the change we saw in him after the camps. He showed initiative, drive, and was more aggressive in the game. He started making goals at almost every game. It was a huge improvement in his skills. Mid-season everyone was asking what the difference was in his skill level. I told them to sign up for the camps. We will definitely be doing more of them this summer. Thank you for the amazing experience he had at the camps and for making a huge improvement in his ability to play the game. **-Ruthie Avina**

I have to say All World Hockey Camp was very well coached and organized. Dylan not only had a great time but learned a lot. Looking forward to next year. Great job! **-Ken P.**

My son had a great time at the All World Camp. We thought it was very well run and had great coaches. The coaches were very focused on the kids and were prepared for each day. As we are from out of town and our son is only seven years old. We will definitely return this summer. **-Jeannette**

My son Tony joined the entry camp the first week of August 2019. We came from Portland and selected it on recommendation from Carlos of the Ducks youth program. I can’t say enough about your coaches and the entire team that did everything possible to challenge Tony and make it fun. I have told everyone in Portland this team is the dream. I believe several are considering this summer! I hope to put Tony in the defenseman camp too. Thank you for helping all kids! **-Alika L.**

RINK LOCATIONS



GREAT PARK ICE

(949) 774-1600
888 RIDGE VALLEY
IRVINE, CA 92618
WWW.GREATPARKICE.COM



ANAHEIM ICE

(714) 535-RINK (7465)
300 WEST LINCOLN AVE.
ANAHEIM, CA 92805
WWW.THERINKS.COM



LAKEWOOD ICE

(562) 429-1805
3975 PIXIE AVE.
LAKEWOOD, CA 90712
WWW.THERINKS.COM



YORBA LINDA ICE

(714) 692-8776 EXT. 10
23641 LA PALMA AVE.
YORBA LINDA, CA 92887
WWW.THERINKS.COM



POWAY ICE

(858) 956-0045
12455 KERRAN ST
POWAY, CA 92064
WWW.THERINKS.COM



IRVINE INLINE

(949) 559-9949
3150 BARRANCA PKWY
IRVINE, CA 92606
WWW.THERINKS.COM